



Vine Street, Uxbridge, UB8 1QE

- Furnished
- Terrace
- Contemporary Kitchen With Appliances
- Walking Distance To Brunel
- Town Centre Location
- No Parking
- Ideal For Single Or Couple
- Secure Video Entry System
- Available July
- Act Fast To Book This Stunning Apartment

£1,395 PCM



Cameron Estate Agents
195 High Street,
Middlesex, Uxbridge, UB8 1LB
E: uxbridge@cameron.co
T: 01895252000
www.cameron.co

Whilst every care has been taken to ensure the accuracy of these particulars, none of the statements contained herein are to be relied upon as representations of fact. These particulars do not constitute an offer or contract.

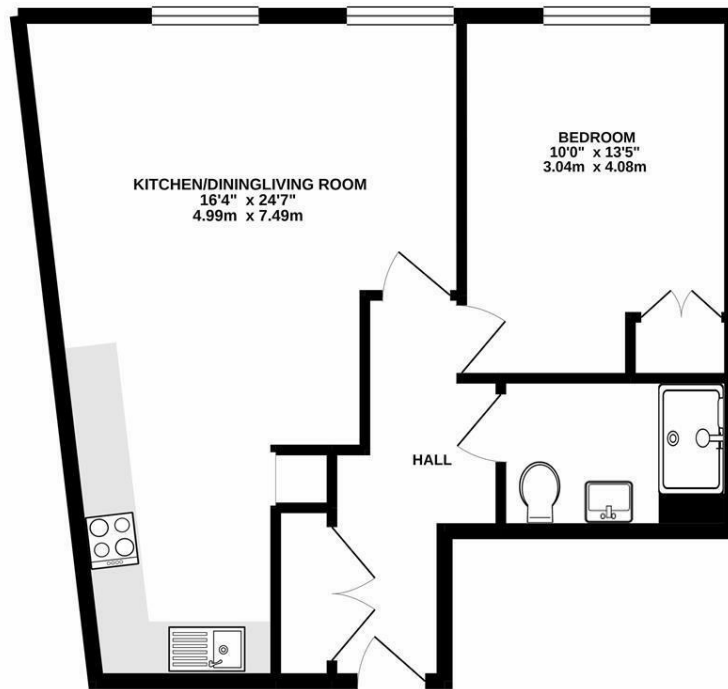
Description

Take possession of this newly converted, one bedroom apartment filled with comfort and incredible lifestyle appeal. Offering spacious light filled interiors, stylish kitchens with Quartz worktops and integrated appliances, luxurious shower rooms with high quality sanitary ware, built in mirror and storage, Italian stone tiles and underfloor heating and the living space offering engineered timber flooring. The bedroom has built in wardrobes and and neutral coloured soft carpet throughout. All things considered this is one of the most exclusive and luxury apartments offered in Uxbridge Town. Available to move-in early July and offered FURNISHED. Located in easy reach of Brunel University, local restaurants/shops and the Uxbridge Bus & Tube Station giving fantastic local links. No parking.

IMPORTANT NOTICE

These particulars have been prepared upon information supplied by the Vendor and should be verified by your surveyors and solicitors. In accordance with the Property Misdescriptions Act 1991 we have prepared these sales particulars as a general guide to give a broad description of the property. They are not intended to constitute part of an offer or contract. We have not carried out a structural survey and the services, appliances and specific fittings have not been tested. All photographs, measurements, floor plans and distances referred to are given as a guide only and should not be relied upon for the purchase of carpets or any other fixtures or fittings. Lease details service charge and ground rent (where applicable) are given as a guide only and should be checked and confirmed by your solicitor prior to exchange of contract

551 sq.ft. (51.1 sq.m.) approx.

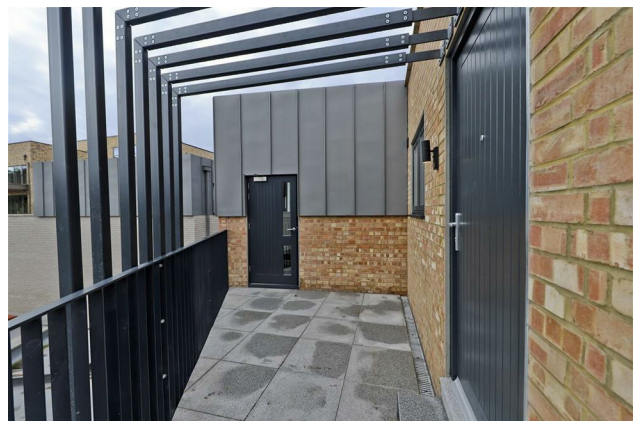
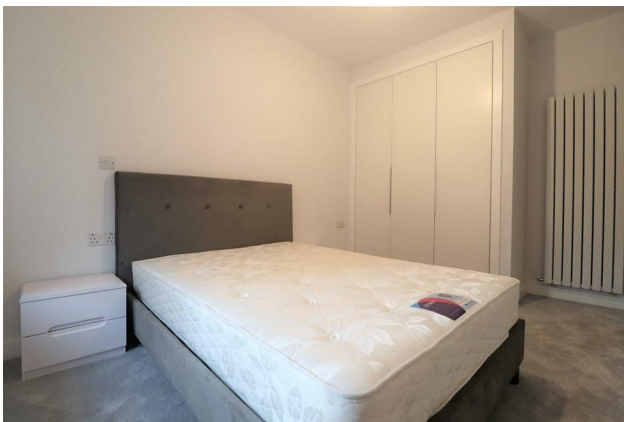


TOTAL FLOOR AREA: 551 sq ft (51.1 sq m) approx.

Whilst every attempt has been made to ensure the accuracy of the floorplan contained herein, measurements of doors, windows, rooms and any other items are approximate and no responsibility is taken for any error, omission or mis-statement. This plan is for illustrative purposes only and should be used as such by any prospective purchaser. The services, systems and appliances shown have not been tested and no guarantee as to their operability or efficiency can be given.

Made with Metropix ©2021

Cameron



Whilst every care has been taken to ensure the accuracy of these particulars, none of the statements contained herein are to be relied upon as representations of fact. These particulars do not constitute an offer or contract.